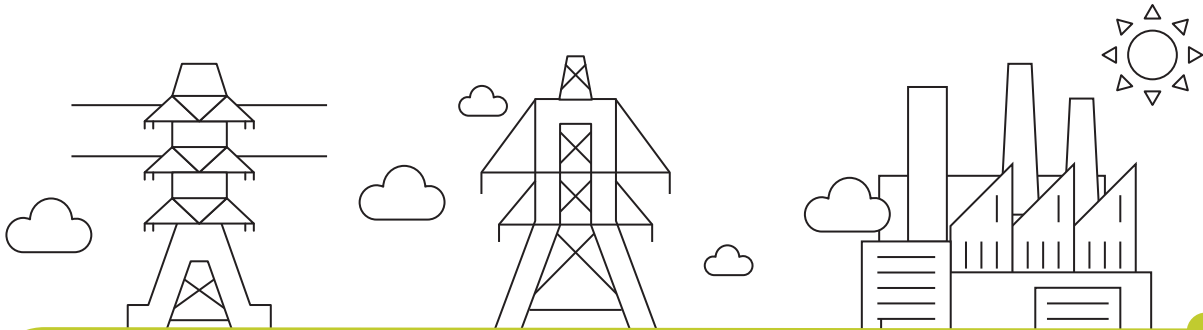


# ENERGY COLORING

## LET'S COLOR THEM ALL!

It takes 8 steps to get electricity to your home. Can you color them all?



### TRANSMISSION LINES

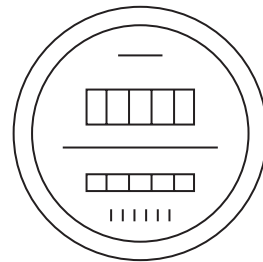
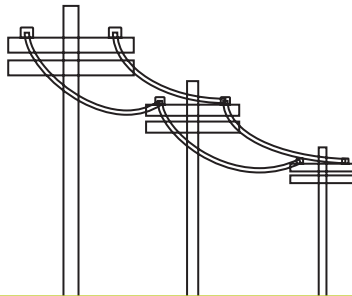
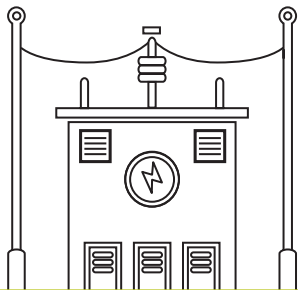
These carry electricity long distances.

### TRANSFORMERS

These make electricity from power lines safe to use in your home.

### POWER PLANT

Where electricity is made.



### SUBSTATION

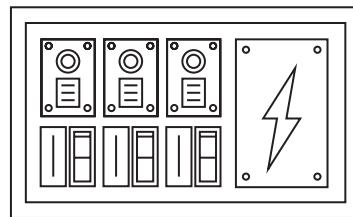
This lowers electricity so it can run through power lines.

### POWER LINES

These lines carry electricity through our neighborhoods.

### POWER METER

This keeps track of the energy you use at home.



### HOME

This where you live and use electricity every day.

### SERVICE PANEL

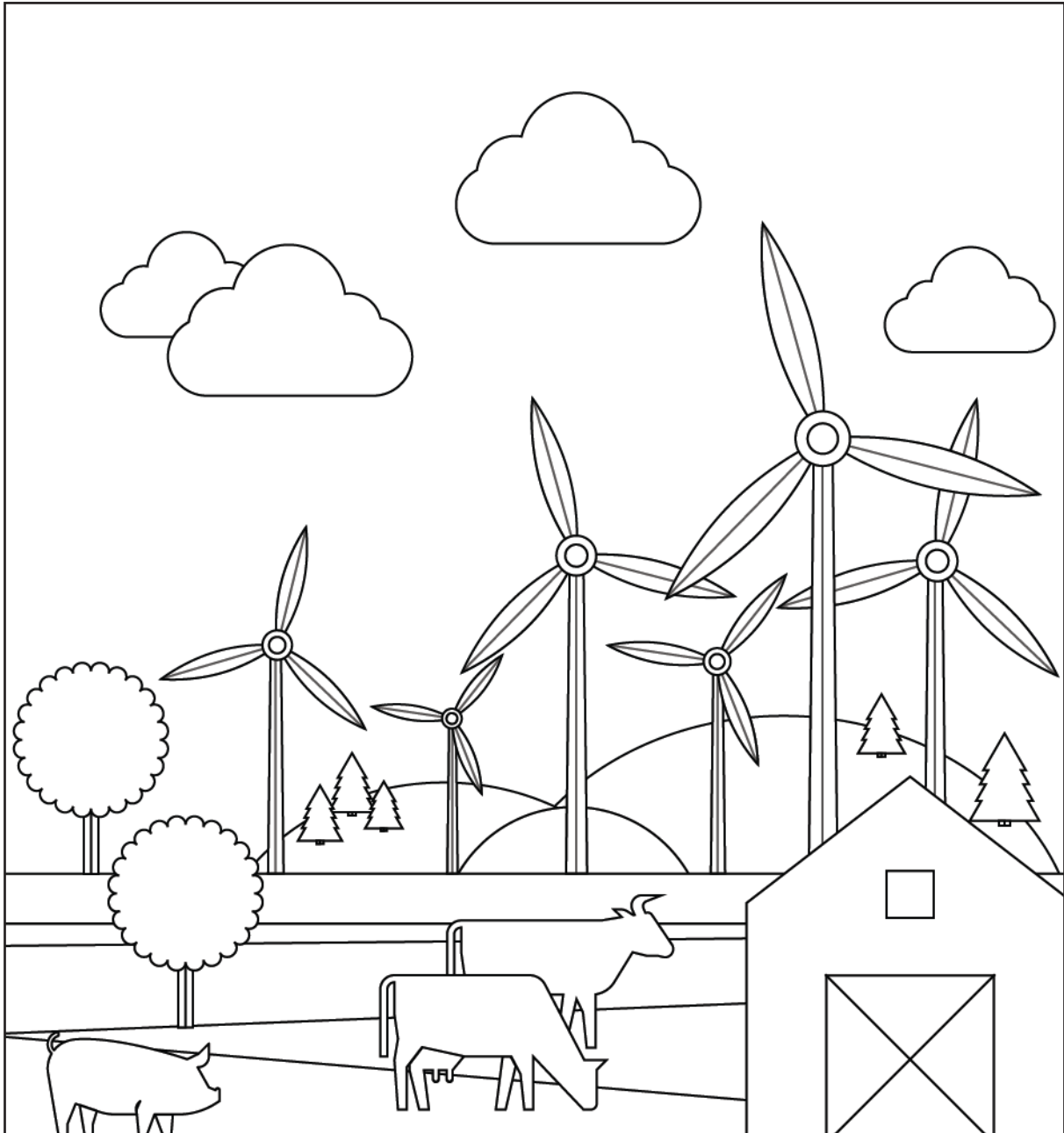
This controls the electricity that runs to different parts of our homes.

Learn more at [allianceformichiganpower.com](http://allianceformichiganpower.com)



# ENERGY COLORING

Michigan gets some of our electricity comes from wind. Can you color these wind turbines?

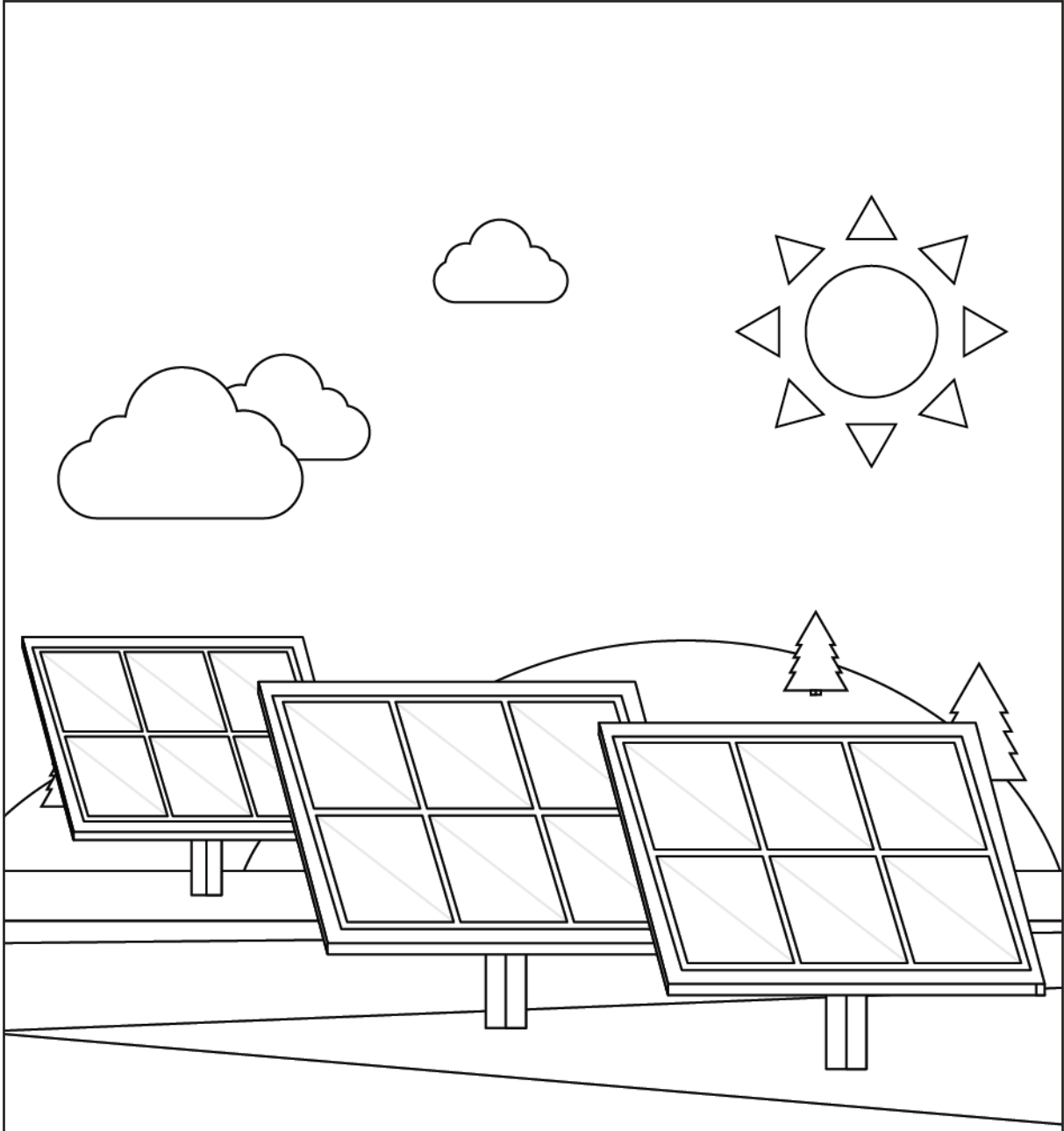


Learn more at [allianceformichiganpower.com](http://allianceformichiganpower.com)



# ENERGY COLORING

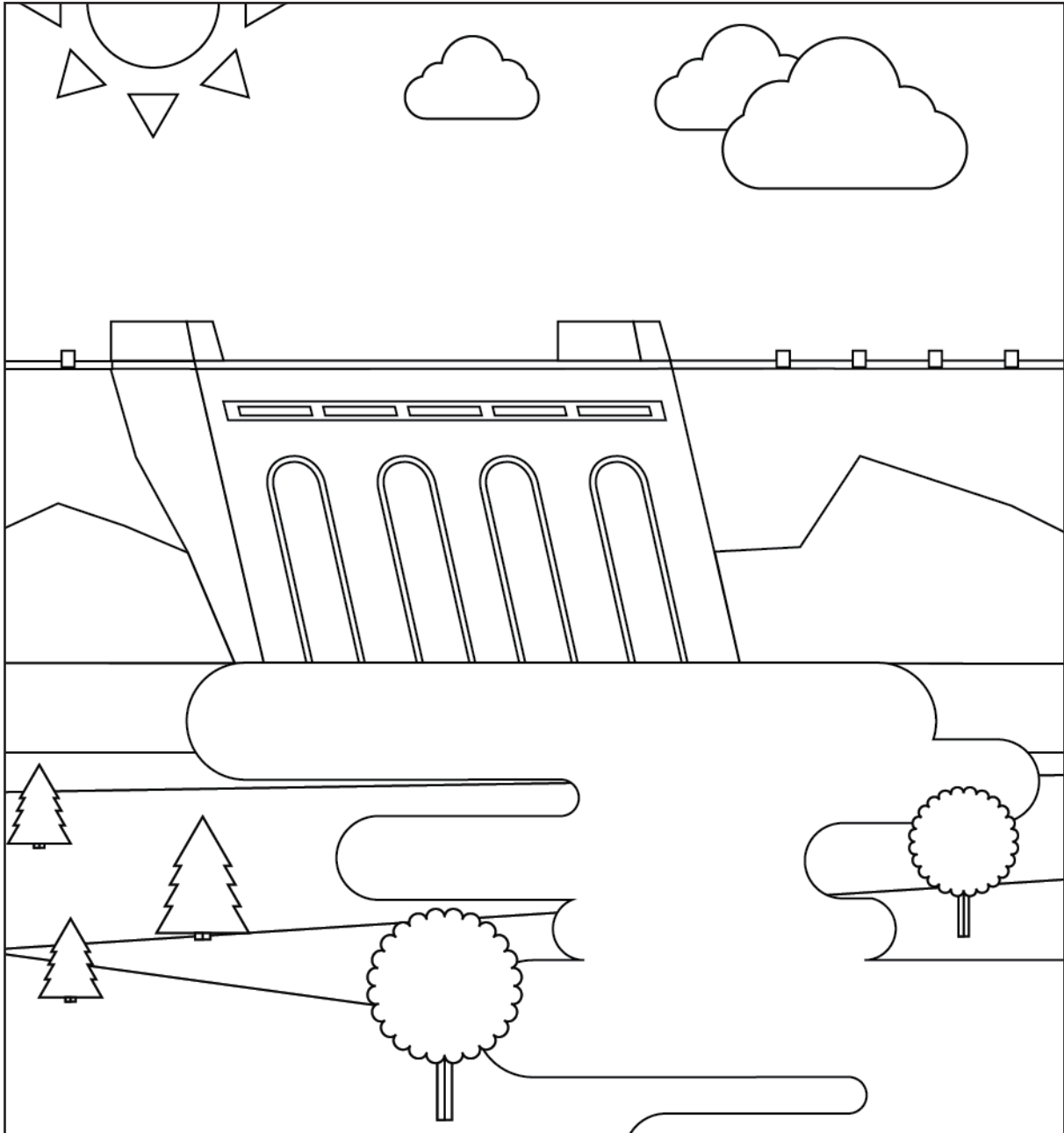
Some of Michigan's energy comes from solar power. Can you color the solar panels here?



Learn more at [allianceformichiganpower.com](http://allianceformichiganpower.com)

# ENERGY COLORING

We even get some of our electricity from water. Can you color the dam you see here?



Learn more at [allianceformichiganpower.com](http://allianceformichiganpower.com)

